

MSX turboR ST and GT memory expansions

Circuit diagrams by Jipe, 2007

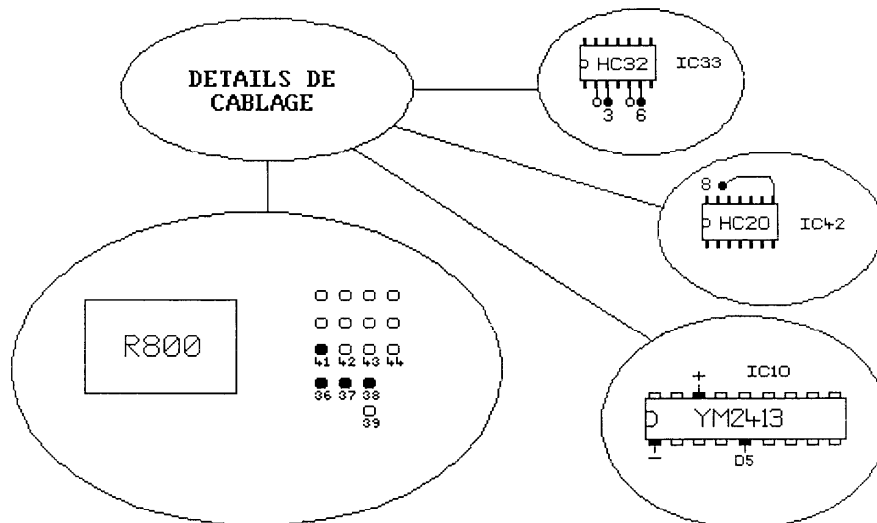
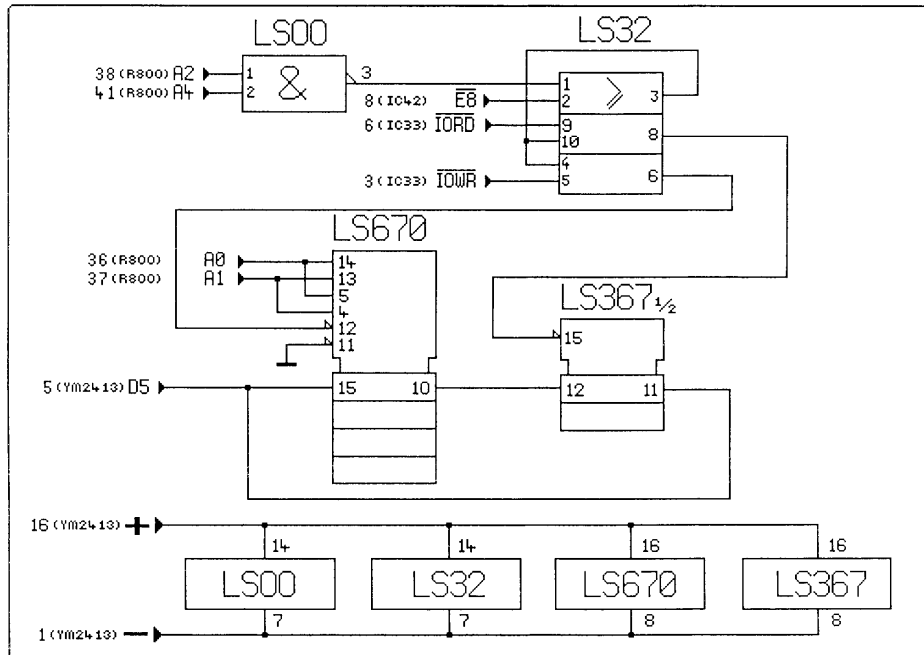
turboR GT memory expansion

turboR ST memory expansion

Circuit diagram for memory expansion MSX turboR GT

The modification requires a new memory ,mapper, shown in the next figure, and new memory IC's, see next page.

SCHEMA MODIFICATION A1 GT POUR MAPPER INTERNE 1 Mo



SOUDER STRAP J302 -UD- (coté composants)
 DESSOUDER R 352 (CMS) RESSOUDER SUR R 353 (coté circuit)

turboR GT with 1 Mb memory expansion

Solder strap at J302 , connect the two solder islands (component side)

Desolder R352 (SMD part)

Solder at position R353 (backside)

turboR ST 1 MB memory expansion



You see a 1Mb extension in a ST with IC directly on the board.

The memory Ics is not on the circuit diagram.

If you use M514400A-70SJ on the ST you have no problem

Remove it on old PC memory, easy just pull with a screwdriver

Soldered directly at the location of the removed original memory IC's.

No Simm no Board and no problem with the keyboard film

With the Simm components destroy the keyboard film

See the SMD resistor near the ram with the special position for bank 0 of memory

On the GT better use a SIMM 80ns because with 70ns the the GT boots abnormal.

Translation of the directions on the next circuit diagram:

Desolder the memory IC's from the ST (IC38-IC32)

Cut the ground connection at the board trace near pin 18 of the R800 IC (see detail), be careful!

Connect pin 18 of the R800 (MA19) to the upper pin of R39 (pin 22 of the S1990)

Connect pin 33 of the R800 to pin 5 of the memory connection IC38 IC32

Solder a resistor of 1K in the location of R41

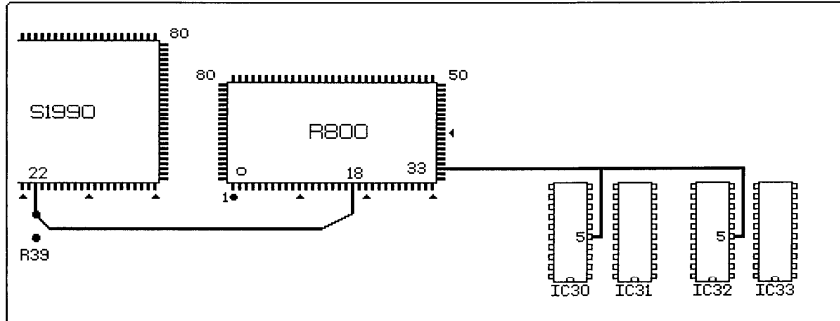
Solder a strap at location R229

Desodler R286 (SMD part)

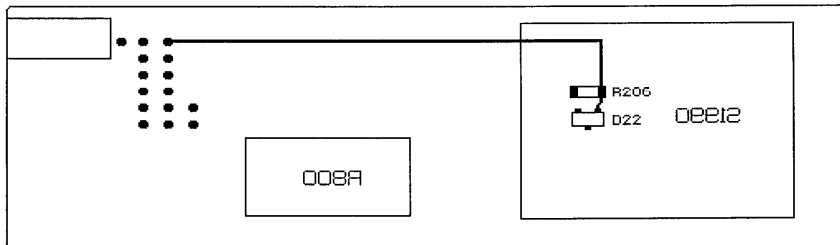
Connect R286 on the side of D22 to a14 (see picture)

MEGAST 1

SCHEMA DE MODIFICATION A1 ST POUR MAPPER INTERNE 1 Mo

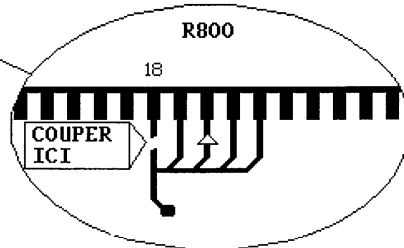


DESSOUDER LES MEMOIRES DU ST (IC30-IC32).
 COUPER LA PISTE RELIANT BROCHE 18 DU R800 A LA MASSE (VOIR
 DETAIL) ATTENTION TRES DELICAT !!
 RELIER BROCHE 18 DU R800 (MA19) A LA BROCHE SUPERIEURE DE R39
 (BROCHE 22 DU S1990).
 RELIER BROCHE 33 DU R800 A LA BROCHE 5 DES SUPPORTS MEMOIRES
 IC30 IC32.
 SOUDER UNE RESISTANCE DE 1K A L'EMPLACEMENT DE R41



SOUDER UN STRAP A L'EMPLACEMENT R229.
 DESSOUDER R206 (CMS).
 RELIER R206 COTE D22 AU BIT A14 (VOIR DESSIN).

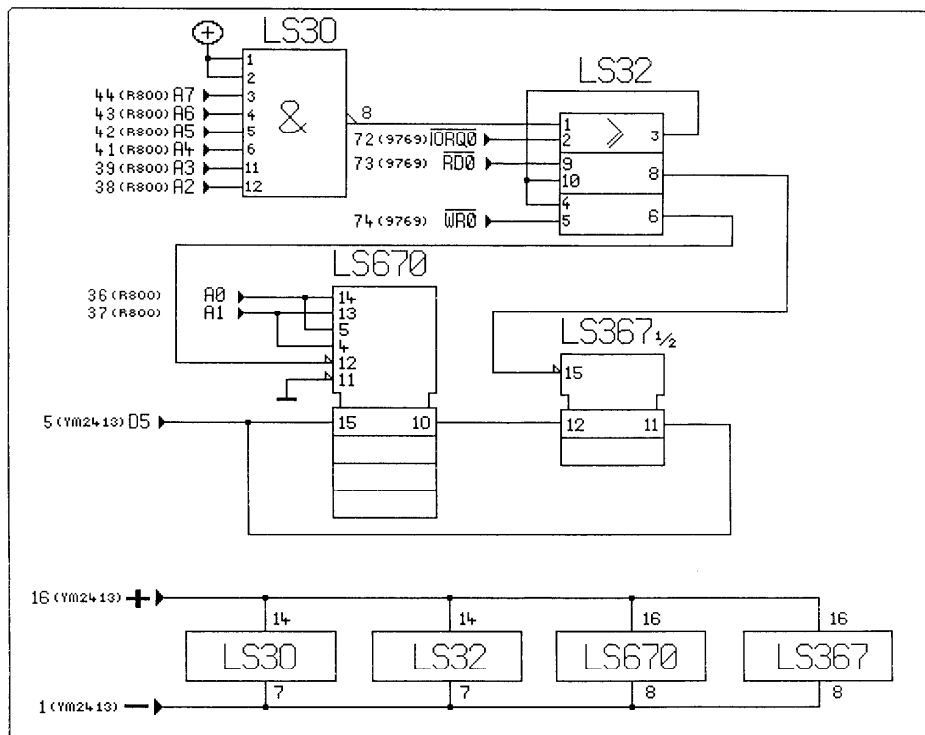
DETAILS DE
 CABLAGE



SI BESOIN DEPLACER LA CAPA SOUS CA RAM
 emplacement libre a sa gauche

MEGAST 2

SCHEMA MODIFICATION A1 ST POUR MAPPER INTERNE 1 Mo



DETAILS DE CABLAGE

